

TITLE PAGE
- Food Science of Animal Resources -
Upload this completed form to website with submission

ARTICLE INFORMATION	Fill in information in each box below
Article Type	Research article
Article Title	Comparative study on the postmortem proteolysis and shear force during aging of pork and beef semitendinosus muscles
Running Title (within 10 words)	Postmortem proteolysis and shear force in pork and beef
Author	Seokhee Han ¹ , Kyung Jo ¹ , Seul-Ki-Chan Jeong ¹ , Hayeon Jeon ¹ , Soeun Kim ¹ , Minkyung Woo ¹ , Samooel Jung ^{1,*} , and Seonmin Lee ^{1,*}
Affiliation	¹ Division of Animal and Dairy Science, Chungnam National University, Daejeon 34134, Korea
Special remarks – if authors have additional information to inform the editorial office	
ORCID (All authors must have ORCID) https://orcid.org	Seokhee Han (https://orcid.org/0009-0006-0816-3471) Kyung Jo (https://orcid.org/0000-0002-3006-5396) Seul-Ki-Chan Jeong (https://orcid.org/0000-0002-2163-8340) Hayeon Jeon (https://orcid.org/0009-0006-3741-7696) Soeun Kim (https://orcid.org/0009-0008-5794-0198) Minkyung Woo (https://orcid.org/0009-0007-5885-8340) Samooel Jung (https://orcid.org/0000-0002-8116-188X) Seonmin Lee (https://orcid.org/0000-0002-5713-1795)
Conflicts of interest List any present or potential conflicts of interest for all authors. (This field may be published.)	The authors declare no potential conflict of interest.
Acknowledgements State funding sources (grants, funding sources, equipment, and supplies). Include name and number of grant if available. (This field may be published.)	This work was supported by Korean Institute of Planning and Evaluation for Technology in Food, Agriculture, and Forestry (IPET) through High Value-added Food Technology Development Program, funded by Ministry of Agriculture, Food and Rural Affairs (MAFRA) [grant number 321025-05].
Author contributions (This field may be published.)	Conceptualization: Jung S, Lee S. Data curation: Han S, Lee S. Formal analysis: Han S, Jo K, Jeong SKC, Jeon H, Kim S, Woo M. Writing - original draft: Han S, Lee S. Writing - review & editing: Jung S, Lee S, Han S, Jo K, Jeong SKC, Jeon H, Kim S, Woo M.
Ethics approval (IRB/IACUC) (This field may be published.)	This article does not require IRB/IACUC approval because there are no human and animal participants.

CORRESPONDING AUTHOR CONTACT INFORMATION

For the corresponding author (responsible for correspondence, proofreading, and reprints)	Fill in information in each box below
First name, middle initial, last name	Samooel Jung; Seonmin Lee
Email address – this is where your proofs will be sent	samooel@cnu.ac.kr; seonminlee@cnu.ac.kr
Secondary Email address	
Postal address	34134
Cell phone number	+82-10-9380-1136; +82-10-8948-4674
Office phone number	+82-42-821-5774

Fax number

+82-42-825-9754

ACCEPTED

Abstract

The differences in the proteolytic patterns and shear force of pork and beef during aging were evaluated. Pork and beef *semitendinosus* muscles were obtained at 24 and 48 h postmortem, respectively, and aged at 4°C for 0 (Day 0), 7 (Day 7), and 14 days (Day 14). Changes in the electrical conductivity were observed in pork on Day 7 and beef on Day 14. The calpain activity increased in pork ($p < 0.05$) after 14 days of aging, whereas that of beef decreased on Day 7 ($p < 0.05$). The cathepsin B activity in pork and beef increased between Day 7 and 14 ($p < 0.05$). The content of α -amino group in the 10% trichloroacetic acid (TCA)-soluble fraction increased between Day 7 and 14 in pork ($p < 0.05$), but increased steadily in beef throughout aging ($p < 0.05$). The electrophoretogram of the myofibrillar proteins revealed a 30 kDa protein band only in the beef lane on Day 14. The cooked pork had no significant changes in the shear force during aging periods ($p > 0.05$), while the gradual decrease in the shear force with the increasing aging periods was shown in the cooked beef ($p < 0.05$). Circular dichroism analysis of myosin extracts from pork and beef revealed thermal denaturation temperatures of 55 and 58°C, respectively. This study highlights the different post-mortem proteolytic patterns and thermal denaturation temperatures of myosin in pork and beef *semitendinosus* muscles, which contribute to distinct changes in the shear force during aging between pork and beef.

Keywords: meat aging, pork, beef, shear force, protease activity

1. Introduction

Meat tenderness is one of the most important indicators used by consumers in evaluating meat quality, along with flavor and juiciness (Jeremiah, 1982). The three factors with the greatest influence on the shear force of meat are the collagen content, shortening, and aging (Bhat, 2018; Jeong et al., 2023; Jo et al., 2024). Various factors such as the ultimate pH, animal species, fat content, and the ratio of muscle fiber types also influence the tenderness of meat during production, and extensive research has sought to identify the interaction between various factors and the correlation with meat tenderness (Kim et al., 2023; Marino et al., 2013).

Aging, the storage of meat under microbiologically safe conditions, is widely used to improve the sensory quality of meat. The main factor influencing the increase in the sensory quality of meat during aging is the breakdown of myofibrillar proteins due to the activity of proteolytic enzymes in the muscles. These enzymes weaken muscle structures and produce protein breakdown products that act as flavor precursors (Toldrá and Flores, 1998; Li et al., 2022; Lee et al., 2024). Additionally, reports indicate that meat aging enhances the *in vitro* protein digestibility of meat (Lee et al., 2023b). Proteolytic enzymes in muscle include calpain, cathepsin, caspase, and proteasome, the activity of which is known to be affected by external factors such as the aging conditions and internal factors such as the biochemical and genetic properties of the muscle (Ertbjerg, 2022). Among these endogenous proteases, calpains and cathepsins are the most studied in relation to meat tenderness (Jiang, 2000). These proteolytic enzymes break down structural proteins and weaken the structural stability of muscle fibers, contributing to improved tenderness (Taylor et al., 1995; Lonergan et al., 2010). Studies have shown that the shear force, a key indicator of meat tenderness, is influenced by the breakdown of muscle proteins during aging, a process known as proteolysis (Marino et al., 2013). A decrease in the shear force, indicating an improvement in meat tenderness due to postmortem protein degradation, has been reported in previous studies (Phelps et al., 2016; Schulte et al., 2019).

From industrial and research perspectives, aging is more commonly used to improve beef tenderness. Based on long-term research, the effect of improving meat quality through aging appears to be clear; however, unlike beef, the effect of improving tenderness through aging in pork is controversial (Koochmaraie et al., 1991; Hwang et al., 2018; Setyabrata et al., 2021). Because the physicochemical properties, such as the protease activity, muscle fiber type, pH, collagen content, and sarcomere length, may differ for pork and beef (Bhat, 2018), we expected that variations in the intrinsic properties of the two species would cause differences in the tenderness of pork and beef. Although individual studies have explored these parameters in specific species (Wheeler et al., 2000; Holman et al., 2002), a comparative study should be conducted.

Thus, the primary objective of this study is to determine the differences in the proteolytic behavior and shear force during the aging of pork and beef. The electrical conductivity, along with the activities of calpain and cathepsin B, the key proteases involved in meat protein degradation, are monitored over 14 days of aging of both pork and beef *semitendinosus* muscles. To focus on the proteolytic patterns and shear force, *semitendinosus* muscles with low-fat content and regular orientation of the muscle fibers were used herein in both species. Additionally, the shear force of the cooked meat during aging is assessed to understand the alterations in the tenderness of these muscle types. By examining these parameters during aging, we aim to identify the different patterns that contribute to the overall tenderness of pork and beef.

2. Materials and methods

2.1. Sample preparation

Semitendinosus muscles of beef (Hanwoo) and pork [(Landrace × Yorkshire) × Duroc] were purchased in the local market and used for aging. The muscles were sourced from three distinct

pork and beef carcasses collected 24 and 48 h postmortem, respectively. In the case of beef, a single muscle was obtained from each carcass, whereas two muscles (left and right) were acquired from pork because of the shorter muscle length compared to that of beef. The appearance, meat color, and pH of the beef and pork *semitendinosus* muscles are presented in Supplementary Figure 1 and Tables 1 and 2. The muscles were cut to a length of 5 cm and vacuum-packed. Subsequently, two muscles were randomly assigned to each storage day; thus, six muscles per storage day (0, 7, and 14 days) were used in the experiment (three batches from three carcasses, each with two replicates). For the aging process, the vacuum-packed muscles were stored at 4°C for 7 or 14 days. At the end of the aging period, half of the samples were ground (FPM250; Kenwood, Havant, UK) and used for physicochemical analysis. For the shear force analysis, the other half of the sample was vacuum-packed again and cooked at 80°C until the core temperature reached 75°C in a water bath. The samples for the shear force tests were cut into 5 cm (length) × 1.3 cm (diameter) pieces. The shear force was measured using an A-XT2 texture analyzer (Stable Micro Systems, Surrey, UK). The speed was set to 2.0 mm/sec, and the measured cutting depth was 4 cm.

2.2. Electrical conductivity

The electrical conductivity was measured at 200 different points ranging from 40 Hz to 200 kHz using an LCR meter (IM3533-01, Hioki, Nagano, Japan). The electrode used in the LCR meter was a 10 × 10 mm bar with a separation distance of 10 mm between the two electrodes. The electrical conductivity was assessed three times by placing the sample in the holder parallel to the direction of the muscle fiber.

2.3. Cathepsin B and calpain activity

Cathepsin B activity was measured with a cathepsin B substrate (Z-Arg-Arg-AMC, Sigma, St. Louis, MO, USA). An aliquot (8 mL) of the extraction buffer (10 mM KH₂PO₄, 1 mM EDTA, 50 mM NaCl, and 250 mM sucrose; pH 7.4) was added to 2 g of the meat sample, homogenized at 13,000 rpm for 30 s (T25 basic, IKA GmbH & Co. KG, Germany), and centrifuged at 3,000×g for 10 min (1580R, LABOGENE Co., Ltd., Lyngø, Denmark). The supernatant was filtered through a 1.0 mm stainless steel mesh to remove the connective tissue and centrifuged again at 3,000×g for 10 min. The supernatant was diluted to a protein content of 0.25 mg/mL. Afterward, 15 µL of the sample, 135 µL of reaction buffer (4 mM EDTA, 60 mM acetic acid, 340 mM sodium acetate, and 0.1% Brij 35; pH 5.0), and 100 µL of 12.5 µM cathepsin B substrate in methanol were added and the mixture was reacted for 10 min at 40°C. The fluorescence of the samples was measured using a plate reader (Varioskan LUX, Thermo Fisher Scientific) at an excitation wavelength of 355 nm and an emission wavelength of 460 nm.

The calpain activity was monitored using a calpain substrate (Suc-Leu-Leu-Val-Tyr-AMC; Abcam). The samples were extracted by adding 4 mL of PBS (2.7 mM KCl, 137 mM NaCl, 10 mM NaHPO₄, and 1.8 mM KH₂PO₄; pH 7.4) to 2 g of the meat sample, which was then homogenized twice by mixing for 30 s at 13,000 rpm and centrifuged at 3,000×g for 10 min (1580R). The supernatant was filtered through a 1.0 mm stainless steel wire mesh to remove the connective tissue, centrifuged again at 3,000×g for 10 min (1580R), and diluted to a protein content of 0.25 mg/mL. An aliquot (85 µL) of the extracted sample, 10 µL of 10X reaction buffer, and 5 µL of 40 µM calpain substrate were mixed and reacted at 37°C for 60 min. After the reaction was complete, the fluorescence of the mixture was measured at an excitation and emission wavelengths of 400 and 505 nm, respectively (Varioksan LUX).

The activities of calpain and cathepsin B are expressed as *n*-fold increases relative to those observed in the meat on Day 0.

2.4. α -Amino group content in the 10% trichloroacetic acid (TCA)-soluble fraction

The content of α -amino groups in the 10% TCA-soluble fraction was determined following the method of Lee et al. (2024) using *o*-phthaldialdehyde reagent. A standard curve was prepared using glycine; the α -amino group content in the sample is expressed in mM/g. The protein content of the samples was measured using the Kjeldahl method (AOAC 928.08).

2.5. Sodium dodecyl sulfate-polyacrylamide gel electrophoresis (SDS-PAGE)

The preparation of myofibrillar protein extract and SDS-PAGE were conducted according to our previously reported method (Lee et al., 2024). After adjusting the protein content of the myofibrillar protein extract with 2 mg/mL, SDS-PAGE was performed using a 12.5% polyacrylamide gel with a protein ladder (3454A, Takara Bio, Shiga, Japan) in a Page Run device (AE-6531 mPAGE, ATTO, Tokyo, Japan).

2.6. Preparation of myosin extract

An aliquot (30 mL) of cold isolation buffer (2 mM MgCl₂, 0.1 M KCl, 1 mM ethylene glycol tetraacetic acid [EGTA], and 10 mM potassium phosphate; pH 7.0) was added to 5 g of the sample and homogenized at 12,000 rpm for 15 s (T25 basic). The homogenate was centrifuged at 2,000×g for 10 min (1580R) to remove the supernatant. The pellet was homogenized in 30 mL Tris buffer (5 mM Tris, 1 mM DTT, and 1 mM EGTA; pH 7.8). Connective tissue was removed using a 1.00 mm mesh strainer, and the homogenate was centrifuged at 2,000×g for 10 min (1580R). Thereafter, 30 mL of phosphate buffer (150 mM potassium phosphate and 150 mM EDTA, pH 6.5) was added to the pellet and homogenized at 12,000 rpm for 30 s (T25 basic). The homogenate was stirred at 4°C for 20 min and then centrifuged at 2,000×g for 10 min (1580R) to remove the supernatant. An aliquot (30 mL) of Guba-Straub buffer (0.4 M NaCl, 150 mM Na₃PO₄, 5 mM MgCl₂, and 5 mM Na₄P₂O₇; pH 6.0) was added to the pellet and homogenized at

12,000 rpm for 30 s (T25 basic). The homogenate was again stirred at 4°C for 20 min and centrifuged at 2,000×g for 10 min (1580R). Distilled water was added to the supernatant (1:1, v/v), and the mixture was homogenized and centrifuged at 2,000×g for 10 min (1580R). The final pellet was homogenized with 4 mL of 0.1 M potassium phosphate (pH 7.0) at 12,000 rpm for 30 s (T25 basic) and used as the myosin extract.

2.7. Circular dichroism (CD) spectroscopy

The thermal denaturation temperature of the myosin extract (protein concentration of 0.5 mg/mL) was determined by CD spectroscopy (Chirascan VX, Applied Photophysics, UK). The CD data (millidegrees) were obtained by increasing the temperature of the sample chamber from 25 to 98°C at a heating rate of 5°C/min. The thermal denaturation temperature of the myosin extract was selected as the point at which the slope of the graph changed during the first differentiation.

2.8. Statistical analysis

Three batches of analyses were performed using *semitendinosus* muscles from three pork and beef carcasses. Statistical analysis was performed using a mixed model with a randomized complete block design in SAS (version 9.3; SAS Institute Inc., Cary, NC, USA). Each replicate was treated as a block. The results are presented as the mean value and standard error of the least-squares mean. Significance testing for the main effect was conducted at the $p < 0.05$ level using Tukey's multiple tests.

3. Results and discussion

3.1 Electrical conductivity

Muscle is composed of several muscle cells surrounded by an insulating cell membrane. The electrical properties of meat change due to changes in the postmortem composition of the intracellular and extracellular fluids that serve as electrolytes (Jo et al., 2023). Electrical conductivity, a measure of the degree to which electricity flows within an object, can be used to assess the degree of damage to the membrane system of postmortem muscle tissues (Byrne et al., 2000). The electrical conductivity was measured in the range of 40 Hz to 200 kHz (Figure 1). The electrical conductivity of pork increased on Day 7 compared to Day 0, but there was no significant difference between Day 7 and 14. However, the electrical conductivity of beef on Day 14 increased compared to that on Day 0 and 7, but there were no change in the electrical conductivity between Day 0 and 7.

Previous studies have reported an increase in the electrical conductivity of meat following postmortem storage (Callow, 1936; Pliquett et al., 1995; Swatland, 1980; Salé, 1976). As the storage period after the slaughter of animals increases, the cell membrane is weakened due to apoptosis, and large amounts of ions present in cellular organelles are released (Feidt and Brun-Bellut, 1996; Ouali et al., 2006). Although the degradation of connective tissue during postmortem storage of muscles is still controversial (Chizzolini et al., 1977; Stanton and Light, 1990; Nishimura, 2015), structural alteration of connective tissue can also potentially affect the changes in the electrical conductivity. Thus, the increase in the electrical conductivity following aging of pork and beef may have been due to the weakening and loss of integrity of the muscle cell, which can also affect the activity of endogenous proteolytic enzymes.

The aging time at which the electrical conductivity changed differed for the two species. These differences might be attributed to differences in the fiber compositions of the pork and beef *semitendinosus* muscles. Considering the muscle fiber composition of the *semitendinosus* muscle, red and white muscle fibers constitute 10–20% and 64–80% of pork, respectively (Semenova et al., 2023), whereas beef contains 10–30% and 34–58%, respectively (Totland et

al., 1988). White muscle fibers are known to have a lower water-holding capacity than red muscle fibers because of their strong glycolytic activity, resulting in the exudation of more water (Kim et al., 2013; Lyu et al., 2024). The purge loss in pork (3.22 and 3.61% higher on Day 7 and 14, respectively) was also higher than that in beef (2.11 and 2.18% on Day 7 and 14, respectively) ($p < 0.05$, data not shown). Once intracellular moisture is released along with the ions present within the cells, the electrical conductivity changes (Pliquett et al., 1990; Byrne et al., 2000). Thus, we assumed that the faster and greater loss of intracellular moisture in pork might have induced a faster increase in the electrical conductivity than in beef. This result is consistent with a study by Byrne et al. (2000), who reported a low water-holding capacity and a rapid increase in the electrical conductivity in fast glycolytic muscles. A decline in the pH can also affect weakening of the cell membrane, where Lyu et al. (2024) reported that the abundance of red (oxidative, type I) muscle fibers slows down the pH decline during aging. Consistently, in this study, the pH decreased on Day 7 and 14 in pork and beef, respectively ($p < 0.05$, Supplementary Table 1). Therefore, the timing of changes in the electrical conductivity differed for the two species owing to variations in the timing of intracellular moisture movement and pH changes, which resulted from the differences in the muscle-fiber composition of pork and beef.

3.2. Protease activity and protein degradation of pork and beef during aging

Calpain and cathepsin B are two key endogenous proteases for the postmortem protein degradation of meat (Bhat, 2018; Kaur et al., 2021). Calpains and cathepsins are two key enzymes in postmortem aging (Lomiwes et al., 2014). Calpains undergo autolysis upon exposure to sufficient Ca^{2+} for activation, which affects their proteolytic activity (Bhat et al., 2018). Cathepsin B, typically inactive in lysosomes, may become active in the cytoplasm after slaughter (Ahmed et al., 2015; Lomiwes et al., 2014). The calpain and cathepsin B activities were measured to determine the protease activity of pork and beef according to the storage period

(Figure 2). The calpain activity increased significantly between Day 7 and 14 in pork ($p < 0.05$) and decreased in beef on Day 7 ($p < 0.05$). According to previous research, the absolute calpain content is higher in red muscle fibers. However, the ratio of calpastatin, an inhibitor of calpain activity, to calpain is higher in red muscle fibers; therefore, the calpain activity appears to be higher in white muscle fibers than in red ones (Koochmaraie, 1996). Thus, the higher calpastatin to calpain ratio in beef might have resulted in a decrease in calpain activity unlike pork (Geesink and Koochmaraie, 1999). It appears that the calpain activity differed depending on the main type of muscle fiber comprising pork and beef. In addition, the muscle pH during storage was higher in pork (6.03, 5.90, and 5.91 on Day 0, 7, and 14, respectively) than in beef (5.56, 5.57, and 5.51 on Day 0, 7, and 14, respectively). Because calpain exhibits optimal activity in the neutral pH range (pH 6–7, Kaur et al., 2021), pH might also contribute to the higher calpain activity in pork during aging than in beef.

The cathepsin B activity increased significantly between Day 7 and 14 in both pork and beef ($p < 0.05$, Figure 2). The activity of cathepsin B, which is present in lysosomes, is expressed subsequent to release into the cytoplasm when the lysosomal membrane is weakened owing to a postmortem pH decline (Koochmaraie, 1992). Zeece et al. (1992) reported that most lysosomes are degraded within 14 days postmortem. As previously shown in the electrical conductivity tests during aging, the electrical conductivity in both pork and beef increased as the aging period increased (Figure 1). Thus, along with disruption of the lysosomal membrane, cathepsin B appears to have been released and exhibited its activity during storage. A higher increase in cathepsin B was observed in beef on Day 14 (approximately 16% increase compared to Day 0) than in pork (approximately 5% increase compared to Day 0). Although the role of cathepsin B in the postmortem proteolysis of meat is controversial (Sentandreu et al., 2002; Kaur et al., 2021), our previous studies have consistently observed the increase in the cathepsin B activity during aging in beef (Lee et al., 2021, 2023a). Because the activity of cathepsin B is optimal in

the acidic region near pH 5.5 (Kaur et al., 2021), the lower pH in beef than that in pork could contribute to the greater increase in the cathepsin B activity in the former during aging.

Depending on the aging period, the extent of proteolysis also differed for pork and beef. During meat aging, the content of small peptides and amino acids increases due to cleavage of the peptide bonds by endogenous proteases (Lonergan et al., 2010). Because small peptides with 3–4 residues are solubilized in 10% TCA (Lee et al., 2024), we monitored the α -amino group content in the 10% TCA-soluble fraction of beef and pork (Figure 3). In pork, there was no significant difference in the α -amino group content on Day 0 and 7 ($p > 0.05$), but a significant increase was observed on Day 14 ($p < 0.05$). In contrast, the α -amino group content in beef increased gradually with prolonged aging ($p < 0.05$). On Day 0, the α -amino group content in pork was 34.94 mM/g, which was significantly higher than that in beef (28.94 mM/g) ($p < 0.05$). The pH of white or intermediate muscle fibers decreases more rapidly than that of red fibers in the early post-mortem stage (Shen et al., 2015), which triggers Ca^{2+} release from the sarcoplasmic reticulum. Calpain-1 is primarily involved in muscle protein degradation after autolysis (Bhat, 2018). Consequently, we assume that proteolysis in pork was initiated on Day 0 by calpain, where the increase in the α -amino group content on Day 14 is attributed to later activation of cathepsin B compared with calpain activation.

Despite the decreased calpain activity on Day 7, the protein degradation in beef increased on Day 7 and 14, where cathepsin B may have played a significant role in this outcome. The electrophoretogram of myofibrillar protein in beef (Figure 4) revealed a 30 kDa band on Day 14, identified as the degradation product of troponin T, which is a primary substrate of cathepsin B (Bhat et al., 2018). This band, considered an indicator of meat protein degradation (Bhat et al., 2018), suggests that the continuous increase in small peptides and the appearance of troponin T degradation products in beef were primarily attributed to cathepsin B activity.

Overall, calpain in pork and cathepsin B in beef seemed to play significant roles in postmortem protein degradation. The data also confirmed gradual protein degradation during aging in beef, unlike pork with a higher α -amino group content on Day 0. Because the rate of protein degradation differs for the two species, the textural changes in beef and pork during aging differ.

3.4. Shear force

The shear force in meat is commonly used as an indicator to evaluate tenderness; a lower shear force means that less force is required to cut the muscle fibers vertically, indicating higher tenderness (Novaković and Tomašević, 2017). Evaluation of the shear force after cooking beef and pork (Figure 5A) indicated that there was no significant difference in the shear force of pork throughout the storage period ($p>0.05$), whereas the shear force in beef decreased on both Day 7 and 14 compared to Day 0 ($p<0.05$). These results indicate that an improvement in the tenderness due to aging was observed only in beef.

The decrease in the meat shear force during aging is mainly caused by the loss of the structural integrity of the muscle fibers due to protein degradation by endogenous proteolytic enzymes (Bhat, 2018). Analysis of the α -amino group content of the 10% TCA-soluble fraction and the SDS-PAGE study confirmed that protein degradation gradually occurred throughout 14 days of aging in beef, and the degradation product of troponin T appeared. Therefore, the muscle structure in beef may have been weakened by protein degradation, leading to improved tenderness.

In pork, no improvement in the shear force was observed on Day 14, whereas the protein degradation increased. In a study by Hamill et al. (2012), type IIB muscle fibers were negatively correlated with tenderness. In this study, the samples were cooked until the core temperature reached 75°C before measuring the shear force. During meat cooking, the structure of protein

molecules changes from the native state to a less-folded state owing to thermal denaturation (Bax et al., 2012). Gelation occurs because of aggregation of the myofibrillar proteins. The temperature at which heat-induced denaturation is initiated varies depending on the type of muscle fiber (Young et al., 1992; Vaskosak et al., 2021). Myosin is responsible for the gelation of meat proteins (Sun and Holley, 2011). When thermal denaturation occurs, myosin heads are aggregated by disulfide bonds, resulting in a structural change in which the helical myosin rods are changed into β -sheets and random coils (Sun and Holley, 2011). Therefore, herein, the CD signal of the myosin extract was acquired at 222 nm for quantifying the α -helix content to determine the protein denaturation temperature (Shimada et al., 2015). The data confirm that the temperature at which denaturation occurred in the secondary myosin structure in pork and beef differed (Figure 5B). The temperature at which the myosin α -helix is attenuated in pork and beef was confirmed to be 55 and 58°C, respectively, consistent with the literature value for the thermal denaturation temperature of myosin of 50–60°C (Liu et al., 2021). The myosin extract of beef *semitendinosus* muscle had a higher thermal denaturation temperature than that of pork *semitendinosus* muscle ($p < 0.05$). Vaskosak et al. (2021) reported that thermal denaturation occurred more quickly in muscle primarily composed of white muscle fibers than in muscles primarily composed of red muscle fibers. They also reported that the extent of protein aggregation after cooking was greater in muscles mainly composed of white muscle fibers, indicating lower thermal stability than that of red muscle fibers. Young et al. (1992) also reported that the temperature at which myofibrillar protein gelation initiates is 10°C lower in white muscle fibers than in red ones. Therefore, despite the occurrence of protein degradation during aging, the lack of improvement in the tenderness of pork after cooking may be due to greater protein aggregation than in beef during heating.

Pork had a lower shear force than beef during the entire aging period ($p < 0.05$). It is known that the three most influential factors affecting the shear force of meat are the collagen content,

sarcomere length, and proteolytic enzyme activity (Bhat et al., 2018). According to Bhat (2018), a high proteolytic enzyme activity, low collagen content, and long sarcomere length are required for high tenderness. In previous studies comparing the collagen content of the *semimembranosus* muscle in pork and beef, the collagen content in pork was reported to be 4.13 and 5.30 mg/g, while the collagen content in beef was reported to be 6.85 mg/g (Seong et al., 2009; Semenova et al., 2023; Moon et al., 2006). Additionally, in a study comparing the length of sarcomeres, the reported sarcomere lengths of pork and beef were 2.50 μm and 1.89 μm , respectively (Moon et al., 2006). Therefore, the low shear force of pork is considered to be due to its low collagen content and long muscle fiber length.

Overall, although the meat proteins in both pork and beef were degraded during aging, no improvement in the tenderness was observed in pork, potentially because of the lower thermal stability of the proteins and greater protein aggregation compared with that in beef during heating. In addition, the shear force of both meats differed on Day 0, potentially due to the different characteristics of pork and beef muscles (collagen content and sarcomere length). Although the improvement in the tenderness of pork was not significant, protein degradation during aging can improve other sensory qualities such as the flavor and taste by releasing free amino acids (Lee et al., 2016), and it is also expected that bioactive peptides released during aging can exhibit several biological effects (Zou et al., 2020).

4. Conclusion

This study examined proteolytic changes and shear force in pork and beef *semitendinosus* muscles during aging. Electrical conductivity increased on Day 7 for pork and Day 14 for beef postmortem. Calpain activity rose over Day 14 in pork but declined by Day 7 in beef. Cathepsin B activity increased on Day 14 in both species. α -Amino group content in the 10% TCA-soluble fraction increased on Day 14 and gradually during aging in pork and beef, respectively. A

distinctive 30 kDa protein band (troponin T degradation product) was only observed in beef.

Although pork had a lower shear force than beef throughout aging, a decrease in the shear force was only observed in beef. Different proteolytic patterns or thermal denaturation temperatures of myosin depending on the muscle fiber types can impact the tenderness of aged meat.

In conclusion, muscle fiber composition and resulting physicochemical properties should be considered for optimal meat textural quality through aging. Future studies are further required to comprehensively compare the proteolytic behaviors of the muscles depending on their primary types of muscle fibers and species.

ACCEPTED

References

- Ahmed Z, Donkor O, Street WA, Vasiljevic T. 2015. Calpains-and cathepsins-induced myofibrillar changes in post-mortem fish: Impact on structural softening and release of bioactive peptides. *Trends Food Sci Tech* 45(1), 130-146.
- Bax ML, Aubry L, Ferreira C, Daudin JD, Gatellier P, Rémond D, Santé-Lhoutellier V. 2012. Cooking temperature is a key determinant of in vitro meat protein digestion rate: investigation of underlying mechanisms. *J Agric Food Chem* 60(10), 2569-2576.
- Bhat ZF. 2018. Role of calpain system in meat tenderness: A review. *Food Sci Hum Wellness* 7, 196–204.
- Bhat ZF, Morton JD, Mason SL, Bekhit AEDA. 2018. Calpain activity, myofibrillar protein profile, and physicochemical properties of beef Semimembranosus and Biceps femoris from culled dairy cows during aging. *J Food Process* 42(12), e13835.
- Byrne CE, Troy DJ, Buckley DJ. 2000. Postmortem changes in muscle electrical properties of bovine *M. longissimus dorsi* and their relationship to meat quality attributes and pH fall. *Meat Sci* 54(1), 23-34.
- Callow EH. 1936. The electrical resistance of muscular tissue and its relation to curing. *Special Report*, 75, 75-81.
- Chizzolini R, Ledward DA, Lawrie RA. 1977. Note on the effect of ageing on the neutral salt and acid soluble collagen from the intramuscular connective tissue of various species. *Meat Sci* 1(2), 111-117.
- Ertbjerg P. 2022. Current understanding on the role of proteolysis on meat quality. In *New Aspects of Meat Quality* (pp. 95-114). Woodhead Publishing.
- Feidt C, Brun-Bellut J. 1996. Estimation of the free ion content of the 11°–13° longissimus dorsi muscle during onset of rigor mortis in kid meat. *Viandes et Produits Carnes* 17(6), 319-321.

- Geesink GH, Koohmaraie M. 1999. Postmortem proteolysis and calpain/calpastatin activity in callipyge and normal lamb biceps femoris during extended postmortem storage. *J Anim Sci* 77(6), 1490-1501.
- Hamill RM, McBryan J, McGee C, Mullen AM, Sweeney T, Talbot A, Davey GC. 2012. Functional analysis of muscle gene expression profiles associated with tenderness and intramuscular fat content in pork. *Meat Sci* 92(4), 440-450.
- Holman BW, Collins D, Kilgannon AK, Hopkins DL. 2020. Using shear force, sarcomere length, particle size, collagen content, and protein solubility metrics to predict consumer acceptance of aged beef tenderness. *J Texture Stud* 51(4), 559-566.
- Hwang YH, Sabikun N, Ismail I, Joo ST. 2018. Comparison of meat quality characteristics of wet-and dry-aging pork belly and shoulder blade. *Korean J Food Scian* 38(5), 950.
- Jeong HG, Jo K, Lee S, Yon HI, Choi YS, Jung S. 2023. Characteristics of pork emulsion gel manufactured with hot-boned pork and winter mushroom powder without phosphate. *Meat Sci* 197, 1090070.
- Jeremiah LE. 1982. A review of factors influencing consumption, selection and acceptability of meat purchases. *J Consum Stud Home Economics* 6(2), 137-154.
- Jiang ST. 2000. Effect of proteinases on the meat texture and seafood quality. *Food Sci Agric Chem* 2, 55-74
- Jo K, Lee S, Jeong HG, Lee DH, Yoon S, Chung Y, Jung S. 2023. Utilization of Electrical Conductivity to Improve Prediction Accuracy of Cooking Loss of Pork Loin. *Food Sci Anim Resour* 43(1), 113.
- Jo K, Lee S, Jeong SKC, Lee DH, Jeong H, Jung S. 2024. Hyperspectral imaging-based assessment of fresh meat quality: Progress and applications. *Microchemical J* 197, 109785.
- Karki R, Oey I, Bremer P, Silcock P. 2023. Understanding the effect of meat electrical conductivity on Pulsed Electric Field (PEF) process parameters and the ability of PEF to

- enhance the quality and shorten sous vide processing for beef short ribs. *Food Res Int* 163, 112251.
- Kaur L, Hui SX, Morton JD, Kaur R, Chian FM, Boland M. 2021. Endogenous proteolytic systems and meat tenderness: Influence of post-mortem storage and processing. *Food Sci Anim Resour* 41(4), 589.
- Kim GD, Jeong JY, Jung EY, Yang HS, Lim HT, Joo ST. 2013. The influence of fiber size distribution of type IIB on carcass traits and meat quality in pigs. *Meat Sci* 94(2), 267-273.
- Kim S, Choi J, Kim ES, Keum GB, Doo H, Kwak J, Ryu S, Choi Y, Pandey S, Lee NR, Jang J, Lee Y, Kim D, Seol KH, Kang SM, Bae IS, Cho SH, Kwon HJ, Jung S, Lee Y, Kim HB. 2023. Evaluation of the correlation between the muscle fat ratio of pork belly and pork shoulder butt using computed tomography scan. *Korean J Agric Sci* 50, 809-815.
- Koohmaraie M, Whipple G, Kretchmar DH, Crouse JD, & Mersmann DH. 1991. Postmortem proteolysis in longissimus muscle from beef, lamb and pork carcasses. *J Anim Sci* 69(2), 617-624.
- Koohmaraie M. 1992. Ovine skeletal muscle multicatalytic proteinase complex (proteasome): purification, characterization, and comparison of its effects on myofibrils with μ -calpains. *J Anim Sci* 70(12), 3697-3708.
- Koohmaraie M. 1996. Biochemical factors regulating the toughening and tenderization processes of meat. *Meat Sci* 43, 193-201.
- Lee S, Jo K, Lee HJ, Jo C, Yong HI, Choi YS, Jung S. 2020. Increased protein digestibility of beef with aging in an infant in vitro digestion model. *Meat Sci* 169, 108210.
- Lee S, Jo K, Jeong HG, Yong HI, Choi YS, Kim D, Jung S. 2021. Freezing-then-aging treatment improved the protein digestibility of beef in an in vitro infant digestion model. *Food Chem* 350, 129224.

- Lee S, Jo K, Jeong HG, Choi YS, Jung S. 2023. Changes in beef protein digestibility in an in vitro infant digestion model with prefreezing temperatures and aging periods. *Heliyon* 9(5).
- Lee S, Jo K, Jeon H, Choi YS, Jung S. 2023. Recent strategies for improving the quality of meat products. *J Anim Sci Tec* 65(5), 895.
- Lee S, Jo K, Choi YS, Jung S. 2024. Production of freeze-dried beef powder for complementary food: Effect of temperature control in retaining protein digestibility. *Food Chem* 433, 137419.
- Li H, Zheng R, Zuo F, Qian C, Yao Z, Dong R, Li C. 2022. Influence of proteolysis on the binding capacity of flavor compounds to myofibrillar proteins. *Foods* 11(6), 891.
- Liu F, Huang H, Lin W, Li L, Wu Y, Yang S, Wang Y. 2021. Effects of temperature on the denaturation and aggregation of (*Lateolabrax japonicus*) myosin from sea bass surimi. *J Food Process* 45(5), e15417.
- Lomiwes D, Farouk MM, Wu G, Young OA. 2014. The development of meat tenderness is likely to be compartmentalised by ultimate pH. *Meat Sci* 96(1), 646-651.
- Lonergan EH, Zhang W, Lonergan SM. 2010. Biochemistry of postmortem muscle—Lessons on mechanisms of meat tenderization. *Meat Sci* 86(1), 184-195.
- Lyu H, Na Q, Wang L, Li Y, Zheng Z, Wu Y, Li Y, Hang G, Zhu X, Ji R, Guo F, Ming L. 2024. Effects of Muscle Type and Aging on Glycolysis and Physicochemical Quality Properties of Bactrian camel (*Camelus bactrianus*) Meat. *Animals* 14(4), 611.
- Marino R, Albenzio M, Della Malva A, Santillo A, Loizzo P, Sevi A. 2013. Proteolytic pattern of myofibrillar protein and meat tenderness as affected by breed and aging time. *Meat Sci* 95(2), 281-287.
- Moon SS. 2006. The effect of quality grade and muscle on collagen contents and tenderness of intramuscular connective tissue and myofibrillar protein for Hanwoo beef. *Asian-australas J Anim Sci* 19(7), 1059-1064.

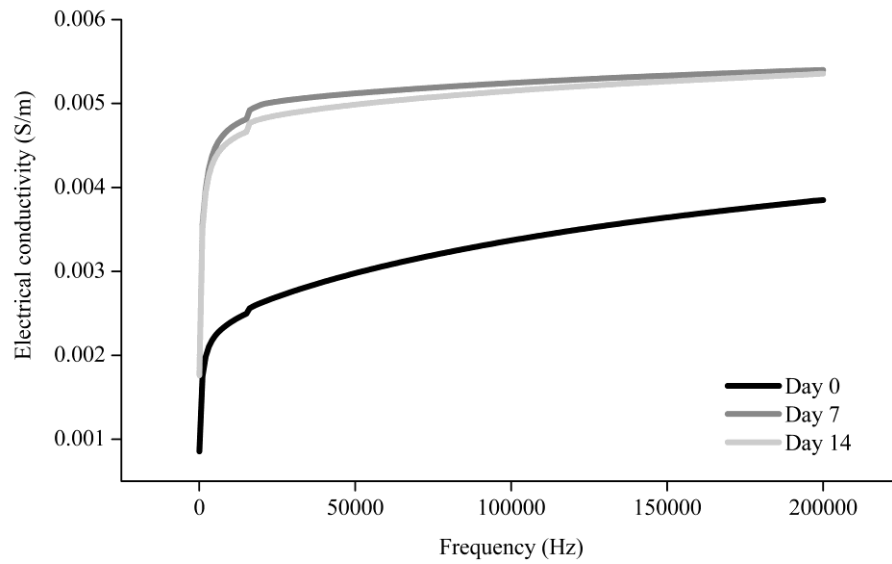
- Nishimura T. 2015. Role of extracellular matrix in development of skeletal muscle and postmortem aging of meat. *Meat Sci* 109, 48-55.
- Novaković S, Tomašević I. 2017, September. A comparison between Warner-Bratzler shear force measurement and texture profile analysis of meat and meat products: A review. In IOP Conference Series: Earth and Environmental Science (Vol. 85, No. 1, p. 012063). IOP Publishing.
- Ouali A, Herrera-Mendez CH, Coulis G, Becila S, Boudjellal A, Aubry L, Sentandreu MA. 2006. Revisiting the conversion of muscle into meat and the underlying mechanisms. *Meat Sci* 74(1), 44-58.
- Phelps KJ, Drouillard JS, Silva MB, Miranda LDF, Ebarb SM, Van Bibber-Krueger CL, O'Quinn TG, Gonzalez JM. 2016. Effect of extended postmortem aging and steak location on myofibrillar protein degradation and Warner-Bratzler shear force of beef *M. semitendinosus* steaks. *J Anim Sci* 94(1), 412-423.
- Pliquett F, Pliquett U, Robekamp W. 1990. Assessment of *M. long* maturation. dorsi and *M. semitendinosus* by pulse impedance measurements. *Meat Industry* 70(12), 1468-1470.
- Pliquett F, Pliquett U, Schöberlein L, Freywald K. 1995. Impedance measurements to characterize the texture of meat. *Meat Industry (Frankfurt)* 75(4), 496-498.
- Sale P. 1976. The electrical impedance of meat. *International Congress of Bioelectrical Impedance*, 347-355.
- Schulte MD, Johnson LG, Zuber EA, Patterson BM, Outhouse AC, Fedler CA, Steadham EM, King DA, Prusa KJ, Huff-Lonergan E, Lonergan SM. 2019. Influence of postmortem aging and post-aging freezing on pork loin quality attributes. *Meat Muscle Biol* 3(1).
- Semenova AA, Pchelkina VA, Nasonova VV, Loskutov SI, Bogolyubova NV, Nekrasov RV, Motovilina AA, Bogdanova YI. 2023. Histological characteristics and functional properties of

- red and white parts of *m. semitendinosus* of slaughter pigs. *Theory and Practice of Meat Processing* 8(3), 191-202.
- Sentandreu MA, Coulis G, Oual A. 2002. Role of muscle endopeptidases and their inhibitors in meat tenderness. *Trends Food Sci Tech* 13(12), 400-421.
- Seong PN, Cho SH, Kim JH, Hah KH, Park BY, Lee JM, Kim DH. 2009. Meat quality of pork muscles from low-fat cuts. *Food Sci Anim Resour* 29(3), 364-373.
- Setyabrata D, Wagner AD, Cooper BR, Kim YHB. 2021. Effect of dry-aging on quality and palatability attributes and flavor-related metabolites of pork loins. *Foods* 10(10), 2503.
- Shen LY, Luo J, Lei HG, Jiang YZ, Bai L, Li MZ, Tang GQ, Li XW, Zhang SH, Zhu L. 2015. Effects of muscle fiber type on glycolytic potential and meat quality traits in different Tibetan pig muscles and their association with glycolysis-related gene expression. *Genet Mol Res*, 14(4), 14366-78.
- Shimada M, Takai E, Ejima D, Arakawa T, Shiraki K. 2015. Heat-induced formation of myosin oligomer-soluble filament complex in high-salt solution. *Int J Biol Macromol* 73, 17-22.
- Stanton C, Light N. 1990. The effects of conditioning on meat collagen: Part 3—Evidence for proteolytic damage to endomysial collagen after conditioning. *Meat Sci* 27(1), 41-54.
- Sun XD, Holley RA. 2011. Factors influencing gel formation by myofibrillar proteins in muscle foods. *Compr Rev Food Sci Food Saf*, 10(1), 33-51.
- Swatland HJ. 1980. Anisotropy and postmortem changes in the electrical resistivity and capacitance of skeletal muscle. *J Anim Sci* 50(1), 67-74.
- Taylor RG, Geesink GH, Thompson VF, Koohmaraie M, Goll DE. 1995. Is Z-disk degradation responsible for postmortem tenderization?. *J Anim Sci* 73(5), 1351-1367.
- Toldrá F, Flores M. 1998. The role of muscle proteases and lipases in flavor development during the processing of dry-cured ham. *Crit Rev Food Sci* 38(4), 331-352.

- Totland GK, Kryvi H, Slinde E. 1988. Composition of muscle fibre types and connective tissue in bovine *M. semitendinosus* and its relation to tenderness. *Meat Sci* 23(4), 303-315.
- Vaskoska R, Vénien A, Ha M, White JD, Unnithan RR, Astruc T, Warner RD. 2021. Thermal denaturation of proteins in the muscle fibre and connective tissue from bovine muscles composed of type I (masseter) or type II (cutaneous trunci) fibres: DSC and FTIR microspectroscopy study. *Food Chem* 343, 128544.
- Wheeler TL, Shackelford SD, Koohmaraie M. 2000. Variation in proteolysis, sarcomere length, collagen content, and tenderness among major pork muscles. *J Anim Sci* 78(4), 958-965.
- Young OA, Torley PJ, Reid DH. 1992. Thermal scanning rheology of myofibrillar proteins from muscles of defined fibre type. *Meat Sci* 32(1), 45-63.
- Zeece MG, Woods TL, Keen MA, Reville WJ. 1992, June. Role of proteinases and inhibitors in postmortem muscle protein degradation. In *Proc. Recip. Meat Conf* (Vol. 45, pp. 51-61).
- Zou X, He J, Zhao D, Zhang M, Xie Y, Dai C, Wang C, Li C. 2020. Structural changes and evolution of peptides during chill storage of pork. *Front Nutr* 7, 151.

Figure legends

(A)



(B)

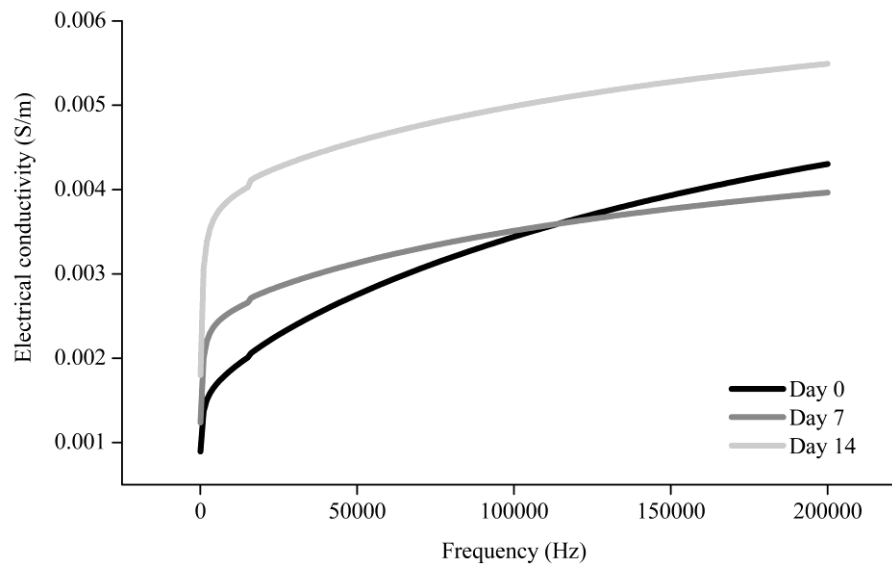


Figure 1. Electrical conductivity (S/m) of raw pork (A) and beef (B) during aging for 14 days.

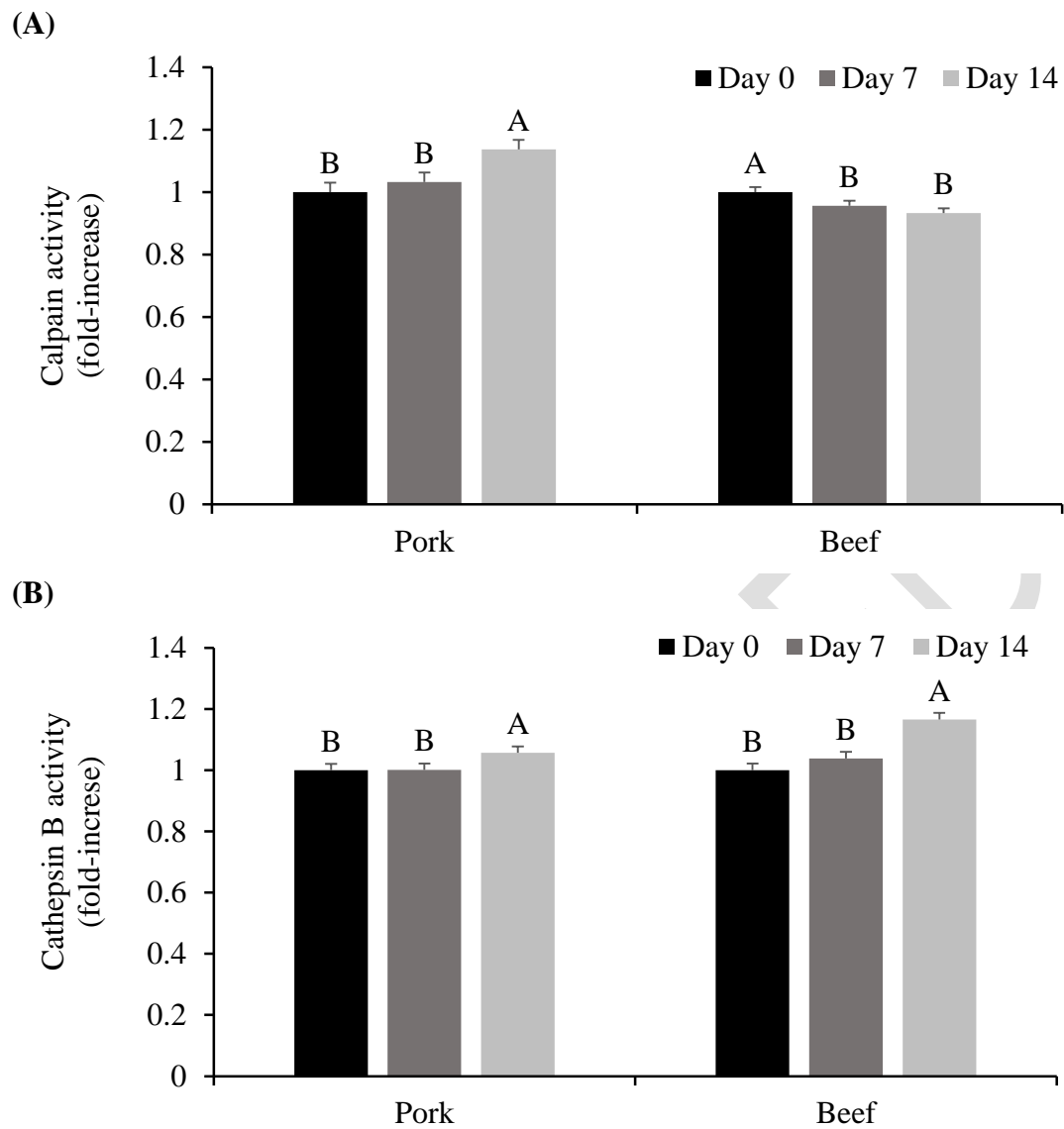


Figure 2. Calpain (A) and cathepsin B (B) activities (fold-increase compared to Day 0) of raw pork and beef during aging for 14 days.

^{A-B} Different uppercase letters indicate significant differences between the means for aged samples of the same species ($p < 0.05$).

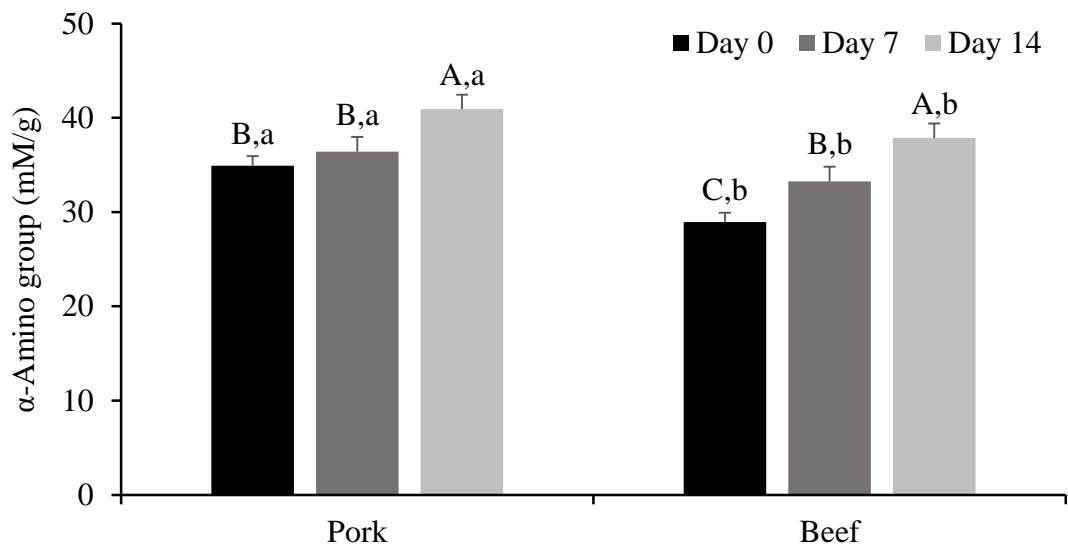


Figure 3. α -Amino group content (mM/g) in the 10% trichloroacetic acid-soluble fraction of raw pork and beef during aging for 14 days.

^{A-C} Different uppercase letters indicate significant differences between the means for aged samples of the same species ($p < 0.05$).

^{a-b} Different lowercase letters indicate significant differences between the means of pork and beef at the same aging time ($p < 0.05$).

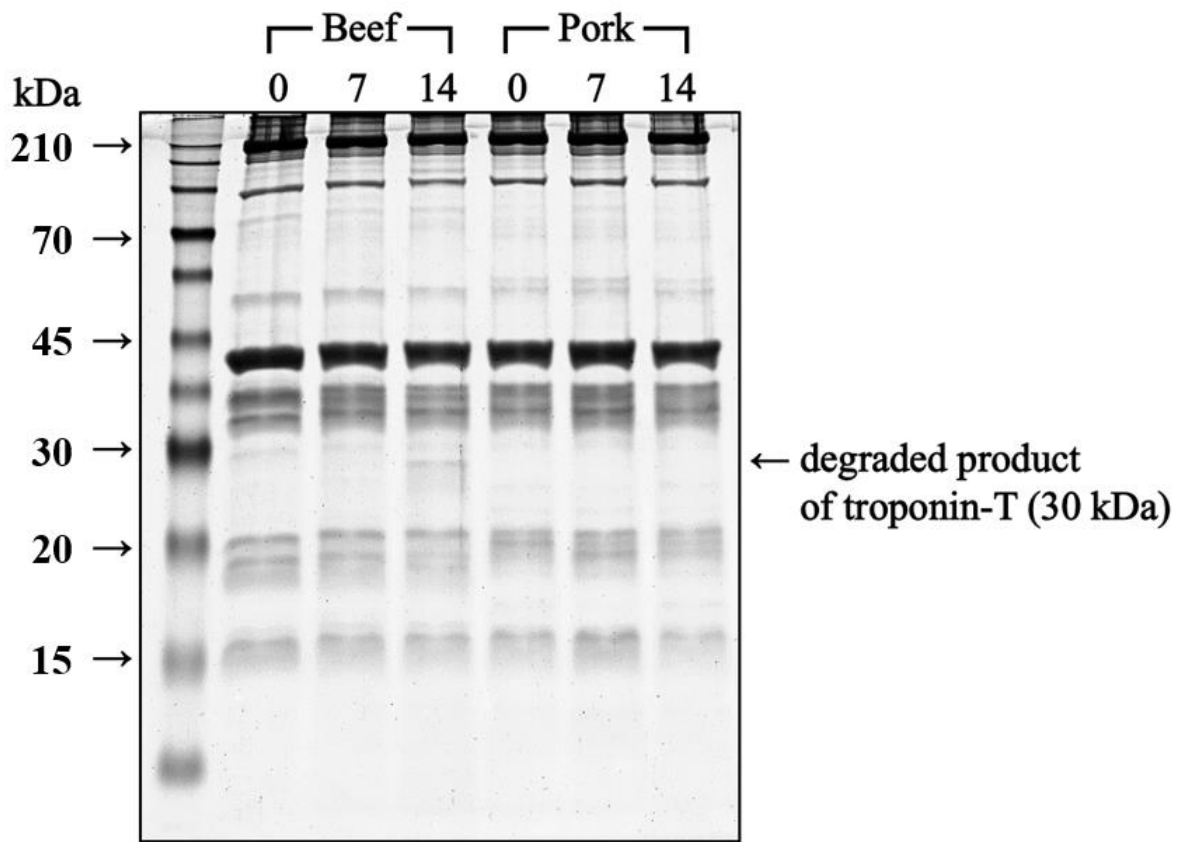


Figure 4. SDS-PAGE electrophoretogram of myofibrillar protein extract of raw pork and beef during aging for 14 days.

0, Day 0 (24 and 48 h postmortem for pork and beef, respectively); 7, meat aged for 7 days; and 14, meat aged for 14 days.

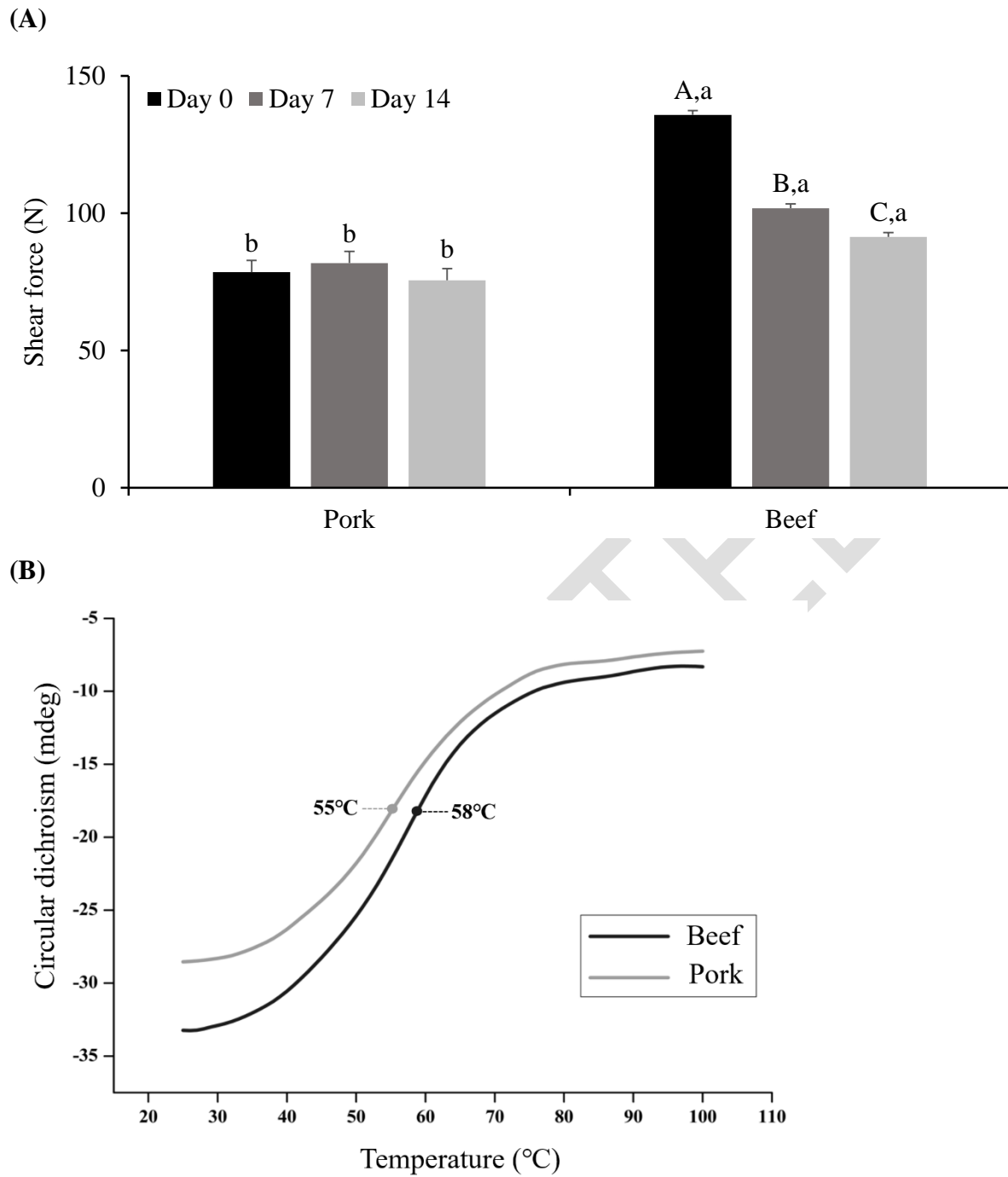


Figure 5. Shear force (N, A) of cooked pork and beef during aging for 14 days and circular dichroism signal (mdeg, B) during heating of myosin extract of pork and beef from 25 to 98°C on Day 0.

^{A-C} Different uppercase letters indicate significant differences between the means for aged samples of the same species ($p < 0.05$).

^{a-b} Different lowercase letters indicate significant differences between the means of pork and beef at the same aging time ($p < 0.05$).

ACCEPTED



Supplementary Figure 1. The appearance of *semitendinosus* muscles from pork and beef on Day 0.

ACCEPTED

Supplementary Table 1. The pH of raw pork and beef muscles (*semitendinosus*) during 14 days of aging

Treatments	Day 0	Day 7	Day 14	SEM ¹
Pork	6.03 ^{A,a}	5.90 ^{B,a}	5.91 ^{B,a}	0.007
Beef	5.56 ^{A,b}	5.57 ^{A,b}	5.51 ^{B,b}	0.009
SEM ¹	0.111	0.006	0.004	

¹Standard error of the least square mean

^{A-C} Different upper case letters indicate significant differences between means of aging days in the same species ($P < 0.05$)

^{a-b} Different lower case letters indicate significant differences between means of pork and beef in the same aging days ($p < 0.05$)

ACCEPTED

Supplementary Table 2. Color (CIE L*, a*, and b* values) of pork and beef on Day 0

	Pork	Beef	SEM ¹
L*	48.62 ^A	30.90 ^B	0.347
a*	10.71 ^B	18.92 ^A	0.156
b*	17.13 ^A	15.91 ^B	0.182

¹Standard error of the least square mean

^{A-C} Different upper case letters indicate significant differences between means ($P < 0.05$)

ACCEPTED