



ARTICLE

Effect of Seawater on the Technological Properties of Chicken Emulsion Sausage in a Model System

Sol Hee Lee^{1,†}, Juhui Choe^{1,†}, Jong-Chan Kim^{2,*}, and Hack Youn Kim^{1,*}

¹Department of Animal Resources Sciences and Resource Science Institute, Kongju National University, Yesan 32439, Korea

²Food Standard Research Center, Korea Food Research Institute, Wanju 55365, Korea

OPEN ACCESS

Received December 26, 2019

Revised February 17, 2020

Accepted February 20, 2020

*Corresponding author :

Hack-Youn Kim
Department of Animal Resource Science and
Resource Science Institute, Kongju National
University, Yesan 32439, Korea
Tel: +82-41-330-1041
Fax: +82-41-330-1249
E-mail: kimhy@kongju.ac.kr

Jong-Chan Kim
Food Standard Research Center, Korea Food
Research Institute, Wanju 55365, Korea
Tel: +82-41-330-1165
Fax: +82-63-219-9454
E-mail: jckim@kfri.re.kr

*ORCID

Sol-Hee Lee
<https://orcid.org/0000-0003-1124-7095>
Juhui Choe
<https://orcid.org/0000-0003-4585-0327>
Jong-Chan Kim
<https://orcid.org/0000-0002-1535-4181>
Hack-Youn Kim
<https://orcid.org/0000-0001-5303-4595>

† These authors contributed equally to this work.

Abstract The aim of this study was to compare the effect of seawater to that of conventional salt (NaCl) on the technological properties of chicken emulsion sausages in a model system. Chicken sausages were prepared with seawater at three levels (10%, 15%, and 20%) in iced water (10%, 5%, and 0%, respectively) or with iced water (20%) and salt (1.2%). There was no difference in pH values and fat loss from emulsion stability between the two treatments. In general, with an increase in the amount of seawater, the water holding capacity (cooking yield and water loss), protein solubility (total and myofibrillar protein), and viscosity were increased. The addition of 20% seawater induced greater ($p < 0.05$) water holding capacity, protein solubility, and viscosity compared to the control sample treated with salt, which was accompanied by an increase in the level of myosin heavy chain protein of samples with 10% and 20% seawater. Furthermore, addition of at least 15% seawater increased all of the main textural properties except for cohesiveness along with the moisture of sausage, whereas the fat and protein contents were decreased. Based on these results, the addition of $\geq 15\%$ seawater to chicken breast sausage can induce equivalent or enhanced technological properties to those induced with salt, including water holding capacity, protein solubility, viscosity, and textural properties.

Keywords seawater, chicken sausage, protein solubility, technological property

Introduction

Salt is a major ingredient in processed meat products owing to its functional capacities, including improving the emulsion stability, water holding capacity, textural properties, flavor, and shelf-life (Bowen et al., 1974; Seman et al., 1980; Watts, 1954). In particular, the protein extracted by salt in raw meat plays an important role in forming a stable gel matrix comprising insoluble fat and other components, resulting in a final product of high quality (Choe et al., 2017).

As an alternative source of salt, seawater has been utilized for the processing of various foods, including meat, for the curing of *Baechu* (Chinese cabbage), and in the

formation of soybean curd (tofu), and has been shown to improve the quality characteristics (Ko et al, 2013; Ryu et al., 2014; Uttaro, 2011). Seawater contains sodium chloride (NaCl; about 80%), sulfates, and various minerals, including zinc, magnesium, calcium, and arsenic (Moon et al., 2004). The pH of seawater is largely dependent on the salt component and is generally around 8.3, which can improve the water holding capacity of meat products (Kim et al., 2016). As the number of negative ions increases as pH high, empty space creates water molecules to settle. However, to our knowledge, there has been no previous attempt at using seawater to improve the technological properties of emulsified meat products. Therefore, the objective of this study was to compare the effects of seawater and salt addition at different addition levels on the technological properties of a chicken sausage model system.

Materials and Methods

Preparation of seawater and sausage samples

The seawater was provided by Yeorumul (Incheon, Korea), comprising 20% NaCl, 0.007% zinc, 3.3% sodium, 1.8% potassium, and 0.0004% arsenic. The chicken breast meat was obtained from a local butcher (Jungwoo-food, Pocheon, Korea). All of the subcutaneous and intramuscular fat, and visible connective tissues were removed from the chicken meat muscle. The meat was cut and ground using a grinder (PA-82, Mainca, Barcelona, Spain) equipped with 3 mm plates. The ground chicken meat (60%) was mixed with pork backfat (20%), iced water (20%), salt (1.2%), sugar (1%), and mixed spice (0.6%) in a bowl-cutter (K-30, Talsa, Valencia, Spain).

The samples were treated with seawater at three levels (10%, 15%, and 20%, respectively) in iced water (10%, 5%, and 0%, respectively) or with iced water and salt as the conventional method. The control is manufactured by adding 1.2% of NaCl and 20% of iced water, and the treatments were treated with seawater at three levels (10%, 15%, and 20%, respectively) in iced water (10%, 5%, and 0%, respectively). The meat emulsion samples were divided into two parts. One portion was used for measurement of pH values, protein solubility, cooking yield, emulsion stability, and viscosity, and the other portion was stuffed into hog casings (Woosung Foodtec, Seoul, Korea) using a stuffer (EM-12, Mainca, Barcelona, Spain) and heated using a chamber (10.10ESI/SK, Alto Shaham, Menomonee Falls, USA) at 85°C until the internal temperature of the samples reached 75°C. The cooked sausage samples were subsequently cooled in iced water for 20 min, and then stored at 5°C until analysis (proximate composition, pH, and textural properties).

Proximate composition

The proximate composition of each sample was analyzed as described by Choe and Kim (2019) following standard AOAC (2012) methods.

pH

Each sample (4 g) was homogenized with 16 mL distilled water using a homogenizer (HMZ-20DN, Pooglim Tech, Seongnam, Korea). The pH value of the homogenate was then measured with a pH meter (Model S220, Mettler-Toledo International, Greifensee, Switzerland).

Cooking yield

Cooking yield was determined as the percent weight of each meat sample after cooking. The samples were heated in a

water bath at 85°C for 35 min until reaching an internal temperature of 72°C and then cooled in ice water. Cooking yield was determined using the following formula:

$$\text{Cooking yield (\%)} = \frac{\text{Weight after cooking (g)}}{\text{Weight before cooking (g)}} \times 100$$

Emulsion stability

The manufactured emulsifiers were sealed a glass tube with the wire cut to 4×4 cm. After heating the glass tube in the chamber (10.10ESI/SK, Alto Shaam, Menomonee Falls, WI, USA) for 35 min at 85°C, it was cooled at 10°C for 1 h. After cooling down completely, the amounts of water and oil were measured, and the loss value was used to determine the emulsion stability according to the following formula:

$$\text{Loss value (\%)} = \frac{\text{Water (or fat) exudation layer (mL)}}{\text{Weight before cooking (g)}} \times 100$$

Protein solubility

Protein solubility (total, myofibrillar, and sarcoplasmic proteins) of the meat emulsion was determined as described by Choe et al. (2017). In brief, for assessment of the total protein content, 2 g of the raw sample was added to 20 mL of 1.1 M potassium iodide and 0.1 M potassium phosphate (pH 7.4). The sarcoplasmic protein was quantified by adding 2 g of the raw sample to 0.025 M potassium phosphate (pH 7.4). For both methods, the samples were homogenized for 2 min and incubated overnight at 2°C. The samples were then centrifuged at 4,032×g for 15 min at 4°C and filtered using Whatman No. 1 filter paper to prepare for quantification. The absorbance of the sample was measured at 540 nm to obtain the optical density (OD) value using the Spectra-photometer (SpectraMax iD3, Molecular devices, Sanjose, USA), and the protein content in each sample was determined by according to the following formula:

$$\text{Total protein (mg/g)} = \text{OD value} \times \text{Upper diluent multiples} \times \text{Buffer dilution factor} \times \text{a value (protein concentrate)}$$

Apparent viscosity

The flow behavior and time dependence of the batter for each sample were investigated at 20±1°C using a rotational viscometer (MerlinVR, Rheosys, Princeton, USA). The meat emulsion was allowed to equilibrate for 5 min at room temperature (25±1°C), and the time dependency of the meat emulsion viscosity was determined by measuring the apparent viscosity under a constant shear rate of 13.44×g for 60 s.

Texture profile analysis (TPA)

To determine the texture profile of the cooked sausage samples, the samples were cut into cubes of 2.5×2.5×2.0 cm (width×length×height) and placed in the Texture Analyzer system (TA 1, Lloyd, Largo, FL, USA) equipped with a 25 mm cylinder probe. The analysis conditions were set to a pre-test speed of 2.0 mm/s, post-test speed of 5.0 mm/s, head speed of 2.0 mm/s, distance of 8.0 mm, and force of 0.4 N. The measured hardness (N), springiness, and cohesiveness were recorded, and the gumminess (N) and chewiness (N) were calculated using these values.

SDS-PAGE

Relevant protein levels were assessed with SDS-PAGE analysis using the method of Ossipow (1993) using a 12% separating gel and 4% stacking gel. The supernatants of the samples were mixed with 3 mM phosphate buffer and 5X sample buffer. Fifteen microliters of each sample was added to each well of the gel and processed for 1 h and 20 min. The gel was removed and fixed in a fixing solution, incubated overnight using a rocker, and stained with Coomassie brilliant blue for 20 min with gentle agitation. The dye was removed with a destaining solution for 1 h, and the gel was stored in a storage solution and scanned.

Statistical analysis

All data were analyzed using one-way ANOVA in SAS (version 9.3), and the results are expressed as mean values with standard deviations. Significant differences ($p < 0.05$) among the mean values were determined using Duncan's multiple range test. For pH values, the differences between raw and cooked samples between groups were tested with the independent samples t-test. Correlation coefficients between variables (proximate composition, pH cooking yield, emulsion stability, protein solubility, and TPA) were tested using the Pearson correlation coefficient.

Results and Discussion

Proximate composition and pH

The addition of seawater and the amount of seawater added affected the proximate composition of the emulsified sausage (Table 1). The moisture and fat contents were not significantly affected by the level or addition of seawater, but the crude protein and ash contents differed significantly according to the presence and the level of seawater addition. The seawater-treated groups showed significantly higher crude protein contents compared to those of the salt-treated control group. In addition, the ash content was significantly the highest in the group processed with 20% seawater. This could reflect the natural salt and ash content in the seawater.

The presence and level of seawater addition did not influence the pH in the samples either before or after cooking, but the cooking treatment significantly increased the pH ($p < 0.05$ or < 0.001) in all treatment groups (Table 1). This increase in pH

Table 1. Proximate composition and pH of chicken-breast sausage formulated with various levels of seawater or salt

Traits	NaCl (Con)	SW10	SW15	SW20	
Moisture (%)	58.75±0.71	54.14±1.16	56.63±1.08	57.92±1.46	
Protein (%)	19.29±1.59 ^b	22.49±0.23 ^a	22.92±1.00 ^a	23.37±1.20 ^a	
Fat (%)	21.25±0.18	23.69±0.66	20.63±1.81	19.31±1.21	
Ash (%)	2.22±0.18 ^b	2.34±0.15 ^b	2.96±0.32 ^{ab}	3.40±0.27 ^a	
pH	Uncooked	5.52±0.49 ^{**}	5.58±0.03 ^{***}	5.64±0.02 ^{***}	5.63±0.01 ^{***}
	Cooked	6.04±0.01 ^{**}	5.73±0.05 ^{***}	5.78±0.01 ^{***}	5.78±0.01 ^{***}

All values are means±SD.

Con, sausage with 1.2% NaCl and 20% iced water; SW10, sausage with 10% seawater and 10% iced water; SW15, sausage with 15% seawater and 5% iced water; SW20, sausages with 20% seawater.

^{a,b} Means in the same row with different letters are significantly different ($p < 0.05$).

^{**} $p < 0.01$, ^{***} $p < 0.001$.

from cooking is due to the non-reactive alkaline amino acids generated by the heat-induced denaturation of the proteins in the emulsion, thereby releasing large amounts of cations (Forrest et al., 1975).

Cooking yield and emulsion stability

The presence and level of seawater addition clearly affected the cooking yield of the sausage (Table 2). The group treated with 10% seawater showed a lower cooking yield compared to that of the other seawater groups and the salt-treated control group ($p < 0.05$), whereas there was no significant difference in cooking yield between the control group and the 15% and 20% seawater groups. Therefore, the addition of 15% or more seawater resulted in similar retention ability as the addition of salt. Froning and Sackett (1985) reported that increasing the concentration of NaCl added to turkey breast muscle increased the protein solubility, which in turn increased the cooking yield, consistent with the present findings. In this study, as shown in Table 3, the protein solubility (total and myofibrillar protein) was increased ($p < 0.05$) as increasing the addition level of seawater and the group with over 15% seawater induced higher ($p < 0.05$) protein solubility compared to group with salt. However, the significant difference in protein solubility did not affect cooking yield ($p > 0.05$). It could be speculated that salt and seawater have the different degree of myofibrillar protein swelling capacity affecting water holding capacity of meat emulsion, depending on content of chloride (Gordon and Barbut, 1992).

With respect to the emulsion stability, the addition of seawater affected the water loss of the sausage, but it did not affect fat loss (Table 2). The group treated with 10% seawater showed the highest water loss, whereas the group treated with 20% seawater showed the lowest water loss, and both effects were statistically significant. This suggests that seawater has similar salt-soluble protein extraction capacity, emulsion formation capacity, and protein-binding capacity to those of salt (Kim et al., 2010). Kwak et al. (2010) reported that the salt-soluble protein derived from anchovies could effectively separate fat and water during the production of emulsified sausage to produce a stable emulsion, which would influence the salt-soluble protein measurement as discussed further below in the next section. Surh et al. (2006) also reported that samples with high

Table 2. Cooking yield and emulsion stability of chicken-breast sausage formulated with various levels of seawater or salt

Traits	NaCl (Con)	SW10	SW15	SW20
Cooking yield (%)	79.02±0.03 ^a	74.46±0.77 ^b	79.90±1.00 ^a	81.36±0.48 ^a
Emulsion stability	Water loss (%)	24.05±0.15 ^{ab}	26.51±0.78 ^a	25.65±1.07 ^{ab}
	Fat loss (%)	1.46±0.03	1.37±0.01	1.10±0.03

All values are means±SD.

Con, sausage with 1.2% NaCl and 20% iced water; SW10, sausage with 10% seawater and 10% iced water; SW15, sausage with 15% seawater and 5% iced water; SW20, sausages with 20% seawater.

^{a,b} Means in the same row with different letters are significantly different ($p < 0.05$).

Table 3. Protein solubility of chicken-breast sausage formulated with various levels of seawater or salt

Traits	NaCl (Con)	SW10	SW15	SW20
Total protein solubility (mg/g)	1,451.38±0.06 ^b	1,816.35±0.08 ^{ab}	1,947.34±0.03 ^a	2,005.18±0.18 ^a
Sarcoplasmic protein solubility (mg/g)	279.13±1.11	237.73±0.79	243.36±0.67	231.1±0.40
Myofibrillar protein solubility (mg/g)	1,172.24±0.23 ^b	1,578.61±0.22 ^b	1,703.97±0.38 ^a	1,774.08±0.27 ^a

All values are means±SD.

Con, sausage with 1.2% NaCl and 20% iced water; SW10, sausage with 10% seawater and 10% iced water; SW15, sausage with 15% seawater and 5% iced water; SW20, sausages with 20% seawater.

^{a,b} Means in the same row with different letters are significantly different ($p < 0.05$).

emulsion stability showed minimal separation of water and fat, which allowed for the production of a high-quality meat product.

Protein solubility

Protein solubility is a key factor in sausage production for producing a high-quality product. During the production of emulsified sausage, improvement in the protein solubility allows for formation of a stable emulsion, which in turn enhances product characteristics such as moisture retention power, yield, and texture (Aminlari et al., 2009; Marcos et al., 2010). According to Briskey and Sayre (1964), enhancing the content of salt-soluble proteins increases the binding power during the production of meat products to ultimately improve the retention power and texture. The group treated with 10% seawater showed similar total protein and salt-soluble proteins to those of the control group (Table 3). However, groups treated with 15% or 20% seawater showed higher total protein and salt-soluble proteins. This difference in total protein solubility may be related to the difference in the salt-soluble proteins between treatment groups (Table 3; $R^2=0.72$).

Xiong et al. (2000) found that the addition of increased concentrations of NaCl also increased the content of water-soluble proteins. Kim et al. (2003) reported that the addition of NaCl in DFD meat increased the total protein solubility, which improved the quality of the meat product. Therefore, addition of more than 15% seawater could improve the quality of the sausage.

Viscosity and TPA

The changes in apparent viscosity according to the presence and the level of seawater addition are shown in Fig. 1. The groups treated with 15% and 20% seawater showed significantly higher viscosity of 102.91 Pa·s and 128.34 Pa·s, respectively, at 60 s compared to that of the control group and the 10% seawater group (96.71 Pa·s and 101.33 Pa·s, respectively). In general, the control group showed the lowest viscosity values, and an increasing trend with increased seawater addition was observed. This suggests that the increased salt from seawater acted on the myofilaments of the meat protein to extract salt-soluble proteins, which further stabilized the water, protein, and fat (Park and Kim, 2016).

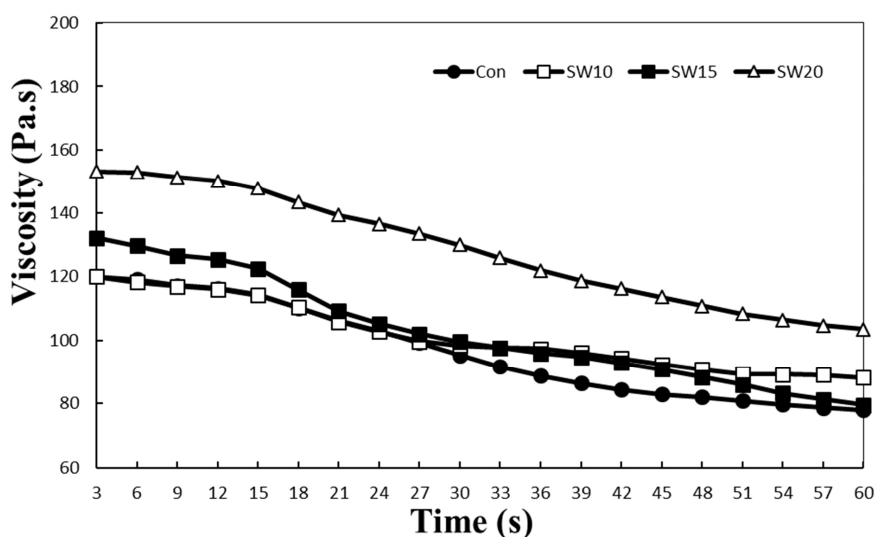


Fig. 1. Change in the apparent viscosity on chicken-breast sausage formulated with various levels of seawater. Con, sausage with 1.2% NaCl; SW10, sausage with 10% seawater; SW15, sausage with 15% seawater; SW20, sausage with 20% seawater.

Excluding cohesiveness, the other physical properties (hardness, springiness, gumminess, and chewiness) of the control group were significantly lower than those of the seawater treatment groups (Table 4). Hardness, gumminess, and chewiness values were the lowest in the control group and the highest in the 20% seawater group. Samples treated with 10% and 15% seawater showed the lowest levels of cohesiveness ($p<0.05$), and samples treated with 20% seawater had the highest cohesiveness values ($p<0.05$).

Moreover, the solubility of total, water-soluble, and salt-soluble proteins was closely correlated to the physical characteristics of the sausage. The solubility of total protein and salt-soluble protein was significantly correlated with hardness ($R^2=0.83$ and $R^2=0.56$, respectively), springiness ($R^2=0.99$ and $R^2=0.25$), cohesiveness ($R^2=0.30$ and $R^2=0.84$), gumminess ($R^2=0.77$ and $R^2=0.77$), and chewiness ($R^2=0.94$ and $R^2=0.62$), which increased with addition of seawater, leading to formation of a stable emulsion. Fat loss and hardness were negatively correlated, which suggests that an increased fat content leads to reduced hardness (Table 5).

SDS-PAGE

Myosin and actin are important proteins that contribute to the main functional properties of myofibrillar protein (Chan et al., 2011). Furthermore, myosin heavy chain (MHC) and tropomyosin in a protein-based gel or emulsion are associated with the gel-forming capacity of comminuted meat products (Benjakul et al., 2004; Kamath et al., 1992). The addition of seawater and the seawater level induced different protein patterns (Fig. 2). The band of MHC appeared in the 15% and 20% seawater-treated samples, whereas no such band appeared in the control and 10% seawater samples. This difference can explain the improvement of viscosity, protein solubility (total and myofibrillar protein), and some of the textural properties with seawater addition. C-protein, which is affected by actinidin and a component of myosin filaments (Aminlari et al., 2009; Asghar et al., 1985), was much more strongly expressed in the 15% and 20% seawater samples compared to the control and 10% seawater samples. There was no difference in the extent of actin expression among the treatments. In general, tropomyosin, which is related with protein solubility (Grossi et al., 2016), was not affected by the addition of seawater. However, for the upper band of tropomyosin, the control and 10% seawater groups showed a slightly stronger band density compared with those in the 15% and 20% seawater groups.

Conclusion

The results of this study suggest that seawater can be used as a source of salt in emulsion-type meat products when added

Table 4. Texture properties of chicken-breast sausage formulated with various levels of seawater or salt

Traits	NaCl (Con)	SW10	SW15	SW20
Hardness (N)	12.65±0.18 ^c	25.10±0.12 ^b	22.65±0.12 ^b	30.10±0.15 ^a
Springiness	0.86±0.03 ^b	0.90±0.03 ^{ab}	0.83±0.03 ^a	0.86±0.03 ^{ab}
Cohesiveness	0.32±0.02 ^{ab}	0.34±0.03 ^c	0.30±0.04 ^c	0.40±0.03 ^a
Gumminess (N)	4.99±0.02 ^c	8.65±0.11 ^b	6.87±0.02 ^b	12.12±0.03 ^a
Chewiness (N)	3.40±0.05 ^c	7.81±0.07 ^b	6.22±0.01 ^b	10.03±0.02 ^a

All values are means±SD.

Con, sausage with 1.2% NaCl and 20% iced water; SW10, sausage with 10% seawater and 10% iced water; SW15, sausage with 15% seawater and 5% iced water; SW20, sausages with 20% seawater.

^{a-c} Means in the same row with different letters are significantly different ($p<0.05$).

Table 5. Pearson correlation between the various technological parameters of chicken emulsion sausages in a model system

	Water	Protein	Fat	Ash	pH	Cooking yield	Water loss	Fat loss	TP	SP	MP	Hardness	Springiness	Gumminess	Chewiness	Cohesiveness
Water		0.95**	0.12	0.30	0.97**	0.91**	0.97**	0.23	0.35	0.21	0.96**	0.37	0.47	0.38	0.21	0.93**
Protein			0.64	0.12	0.99***	0.17	0.94**	0.58	0.28	0.26	0.20	0.85	0.39	0.44	0.33	0.25
Fat				0.85	0.71	0.44	0.36	0.68	0.19	0.19	0.23	0.94**	0.95**	0.37	0.39	0.28
Ash					0.82	0.26	0.62	0.35	0.79	0.69	0.19	0.76	0.91**	0.90**	0.35	0.36
pH						0.74	0.26	0.31	0.25	0.43	0.68	0.94**	0.05	0.36	0.40	0.34
Cooking yield							0.74	0.07	0.30	0.17	0.25	0.95**	0.85	1.00***	0.26	0.98**
Water loss								0.80	0.23	0.21	0.14	0.78	0.76	0.92**	0.88	0.22
Fat loss									0.74	0.16	0.21	0.29	0.94**	0.88	0.84	0.71
TP										0.20	0.56	0.83	0.99	0.77	0.94*	0.30
SP											0.90**	0.20	0.74	0.68	0.79	0.91**
MP												0.56	0.25	0.84	0.77	0.62
Hardness													0.94	0.09	0.35	0.38
Springiness														0.90	0.99*	0.38
Gumminess															0.75	0.15
Chewiness																0.86
Cohesiveness																

* p<0.05, ** p<0.01, *** p<0.001.

TP, total protein; SP, sarcoplasmic protein; MP, myofibrillar protein.

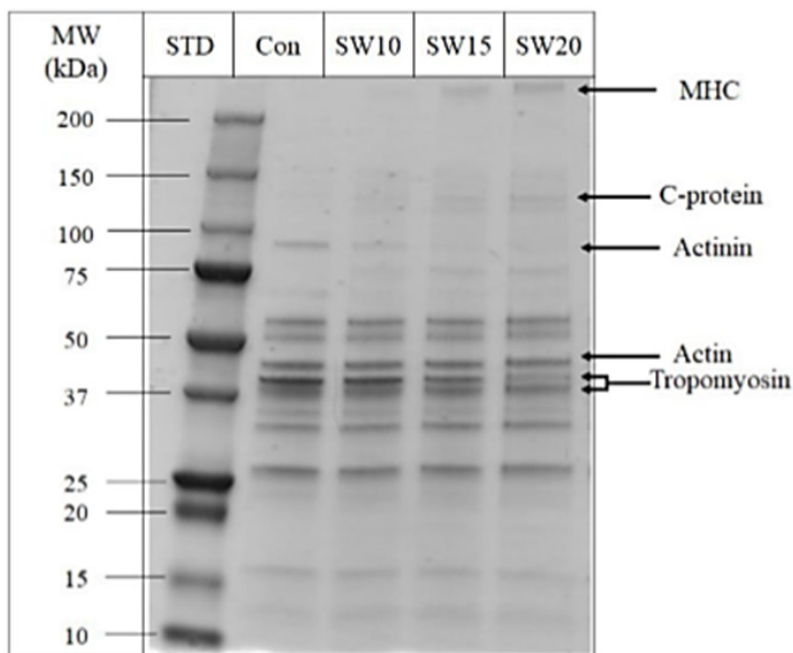


Fig. 2. SDS-PAGE gel and comparative band (pixel) intensity from chicken-breast sausage samples formulated with various levels of seawater. Con, sausage with 1.2% NaCl; SW10, sausage with 10% seawater; SW15, sausage with 15% seawater; SW20, sausage with 20% seawater. MW, molecular weight; STD, standard marker; MHC, myosin heavy chain.

at $\geq 15\%$ without an adverse effect. Moreover, the addition of 20% seawater can enhance the technological properties of chicken emulsion sausages, including the total and myofibrillar protein solubility, viscosity, and textural properties compared to the conventional use of salt. Furthermore, seawater with chicken meat would probably result in better than those that use salt.

Conflicts of Interest

The authors declare no potential conflicts of interest.

Acknowledgments

This research was supported by the Main Research Program (E0193114-01) of the Korea Food Research Institute (KFRI) funded by the Ministry of Science and ICT (Korea).

Author Contributions

Conceptualization: Kim HY. Data curation: Lee SH, Kim HY. Formal analysis: Lee SH. Validation: Choe J, Kim JC. Writing - original draft: Lee SH, Choe J. Writing - review & editing: Lee SH, Choe J, Kim JC, Kim HY.

Ethics Approval

This article does not require IRB/IACUC approval because there are no human and animal participants.

References

- AOAC. 2000. Official methods of analysis of AOAC. 17th ed. Association of Official Analytical Chemists, MD, USA.
- Aminlari M, Shekarforoush SS, Gheisari HR, Golestan L. 2009. Effect of actinidin on the protein solubility, water holding capacity, texture, electrophoretic pattern of beef, and on the quality attributes of a sausage product. *J Food Sci* 74:C221-C226.
- Asghar A, Samejima K, Yasui T, Henrickson R. 1985. Functionality of muscle proteins in gelation mechanisms of structured meat products. *Crit Rev Food Sci Nutr* 22:27-106.
- Benjakul S, Visessanguan W, Tueksuban J, Tanaka M. 2004. Effect of some protein additives on proteolysis and gel-forming ability of lizardfish (*Saurida tumbil*). *Food Hydrocoll* 18:395-401.
- Bowen VG, Cerveny JG, Deibel RH. 1974. Effect of sodium ascorbate and sodium nitrite on toxin formation of *Clostridium botulinum* in wieners. *Appl Microbiol* 27:605-606.
- Briskey EJ, Sayre RN. 1964. Muscle protein extractability as influenced by conditions of post-mortem glycolysis. *Proc Soc Exp Biol Med* 115:823-825.
- Chan JTY, Omana DA, Betti M. 2011. Functional and rheological properties of proteins in frozen turkey breast meat with different ultimate pH. *Poult Sci* 90:1112-1123.
- Choe J, Kim HW, Farouk MM, Brad Kim YH. 2017. Impacts of post-mortem ageing prior to freezing on technological and

- oxidative properties of coarse ground lamb sausage in a model system. *Asian-Australas J Anim Sci* 30:1021-1028.
- Choe J, Kim HY. 2019. Comparison of three commercial collagen mixtures: Quality characteristics of marinated pork loin ham. *Food Sci Ani Resour* 39:345-353.
- Forrest JC, Aberle ED, Hedrick HB, Judge MD, Merkel RA. 1975. Principle of meat processing. In *Principles of meat science*. Aberle ED (ed). WH Freeman and Company, San Francisco, CA, USA. pp 190-226.
- Froning GW, Sackett B. 1985. Effect of salt and phosphates during tumbling of turkey breast muscle. *Poult Sci* 64:1328-1333.
- Gordon A, Barbut S. 1992. Effect of chloride salts on protein extraction and interfacial protein film formation in meat batters. *J Sci Food Agric* 58:227-238.
- Grossi A, Olsen K, Bolumar T, Rinnan A, Øgendal LH, Orlien V. 2016. The effect of high pressure on the functional properties of pork myofibrillar proteins. *Food Chem* 196:1005-1015.
- Kamath GG, Lanier TC, Foegeding EA, Hamann DD. 1992. Nondisulfide covalent cross-linking of myosin heavy chain in “setting” of Alaska pollock and Atlantic croaker surimi. *J Food Biochem* 16:151-172.
- Kim CJ, Lee ES, Jeong JY, Kweon TS. 2003. The effects of NaCl on the physicochemical properties of DFD and normal pork meat batter. *Korean J Food Sci Technol* 35:206-210.
- Kim HW, Choi JH, Choi YS, Han DJ, Kim HY, Lee MA, Kim SY, Kim CJ. 2010. Effects of sea tangle (*Lamina japonica*) powder on quality characteristics of breakfast sausages. *Korean J Food Sci Anim Resour* 30:55-61.
- Kim PH, Park YS, Park K, Kwon JY, Yu HS, Lee HJ, Lee TS. 2016. Change in concentrations of human norovirus and male-specific coliphage under various temperatures, salinities, and pH levels in seawater. *Korean J Fish Aquat Sci* 49:454-459.
- Ko KH, Moon SH, Yoo YJ, Kim IC. 2013. Characteristics of soybean curds manufactured by various bitterns. *Korean J Food Preserv* 20:37-44.
- Kwak JH, Kim KBWR, Song EJ, Lee CJ, Jung JY, Choi MK, Kim MJ, Ahn DH. 2010. Effect of salt soluble protein extracts from anchovy on quality characteristics of sausage. *J Korean Soc Food Sci Nutr* 39:1839-1845.
- Lee H, Choe J, Yong HI, Lee HJ, Kim HJ, Jo C. 2018. Combination of sea tangle powder and high-pressure treatment as an alternative to phosphate in emulsion-type sausage. *J Food Process Preserv* 42:e13712.
- Marcos B, Kerry JP, Mullen AM. 2010. High pressure induced changes on sarcoplasmic protein fraction and quality indicators. *Meat Sci* 85:115-120.
- Moon DS, Jung DH, Kim HJ, Shin PK. 2004. Comparative analysis on resources characteristics of deep ocean water and brine ground water. *J Korean Soc Mar Environ Eng* 7:42-46.
- Ossipow V, Laemmli UK, Schibler U. 1993. A simple method to renature DNA-binding proteins separated by SDS-polyacrylamide gel electrophoresis. *Nucleic Acids Res* 21:6040-6041.
- Park SY, Kim HY. 2016. Effects of NaCl concentration on physicochemical properties of pork emulsion. *J Korean Soc Food Sci Nutr* 45:551-556.
- Ryu JP, Yang JH, Young BC, Lee SI, Han ES. 2014. Quality characteristics of baechu-kimchi salted at high salt concentration for a short time. *J Korean Soc Food Sci Nutr* 43:1913-1919.
- Seman DL, Olson DG, Mandigo RW. 1980. Effect of reduction and partial replacement of sodium on bologna characteristics and acceptability. *J Food Sci* 45:1116-1121.
- Surh JH, Ward LS, McClemets DJ. 2006. Ability of conventional and nutritionally-modified whey protein concentrates to stabilize oil-in-water emulsions. *Food Res Int* 39:761-771.

- Uttaro B, Badoni M, Zawadski S, Gill CO. 2011. Effects of the pressure, flow rate and delivered volume of brine on the distributions of brine and bacteria in brine-injected meat. *Food Control* 22:180-185.
- Watts BM. 1954. Oxidative rancidity and discoloration in meat. *Adv Food Res* 5:1-52.
- Xiong YL, Lou X, Wang C, Moondy WG, Harmon RJ. 2000. Protein extraction from chicken myofibrils irrigated with various polyphosphate and NaCl solution. *J Food Sci* 65:96-100.