



## ERRATUM

# Erratum to: Milk Containing BF-7 Enhances the Learning and Memory, Attention, and Mathematical Ability of Normal Persons

Do-Hee Kim<sup>1</sup>, Hyun-Jung Lee<sup>1</sup>, Gooihun Choi<sup>2</sup>, Ok-Hyeon Kim<sup>1</sup>, Kwang-Gill Lee<sup>3</sup>, Joo-Hong Yeo<sup>3</sup>, Jun-Young Lee<sup>4</sup>, Sang Hyung Lee<sup>5</sup>, Young Chul Youn<sup>6</sup>, Jang Han Lee<sup>7</sup>, Hyun-Dong Paik<sup>2</sup>, Won Bok Lee<sup>1</sup>, Sung-Su Kim<sup>1</sup>, and Hee-Yeon Jung<sup>4\*</sup>

## OPEN ACCESS

\*Corresponding author : Hee-Yeon Jung  
Department of Psychiatry, College of  
Medicine, Seoul National University, SMG-  
SNU Boramae Medical Center, Seoul 07061,  
Korea  
Tel: +82-2-870-2120  
Fax: +82-2-846-2466  
E-mail: [hyjung@snu.ac.kr](mailto:hyjung@snu.ac.kr)

<sup>1</sup>Department of Anatomy and Cell Biology, College of Medicine, Chung-Ang University, Seoul 06974, Korea

<sup>2</sup>Division of Animal Life Science, Konkuk University, Seoul 05029, Korea

<sup>3</sup>Applied Entomology Division, Department of Sericulture and Entomology, National Academy of Agriculture Science, Wanju 55365, Korea

<sup>4</sup>Department of Psychiatry, College of Medicine, Seoul National University, SMG-SNU Boramae Medical Center, Seoul 07061, Korea

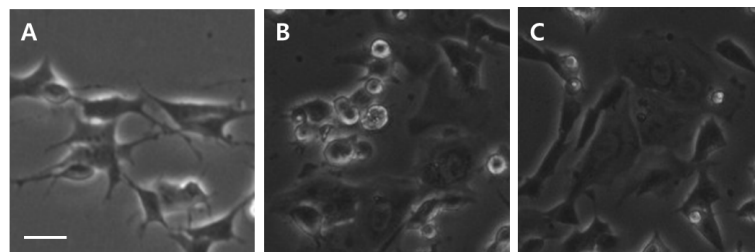
<sup>5</sup>Department of Neurosurgery, College of Medicine, Seoul National University, SMG-SNU Boramae Medical Center, Seoul 07061, Korea

<sup>6</sup>Department of Neurology, College of Medicine, Chung-Ang University, Seoul 06974, Korea

<sup>7</sup>Department of Psychology, College of Liberal Arts, Chung-Ang University, Seoul 06974, Korea

## Erratum

In the published article “Milk containing BF-7 enhances the learning and memory, attention, and mathematical ability of normal persons. Korean J Food Sci Anim Resour 29:278-282. <https://doi.org/10.5851/kosfa.2009.29.2.278>,” the Fig. 3 has to be modified. The editorial office will report that this amendment is made at the request of the author.



**Fig. 3.** Morphological assessment of neuronal stress by phase-contrast microscopy reveals that neuronal stress *in vitro* was prevented by BF-7 milk. (A) Control; (B) 3-HK; and (C) BF-7 milk + 3-HK. SK-N-SH cells were treated with 250  $\mu$ M of 3-HK for 24 h without (B) or with pretreatment (C) with 2  $\mu$ L of BF-7 milk (10 mg of BF-7 in 200 mL of plain milk). Scale bar, 10  $\mu$ m.

## References

Kim DH, Lee HJ, Choi G, Kim OH, Lee KG, Yeo JH, Lee JY, Lee SH, Youn YC, Lee JH, Paik HD, Lee WB, Kim SS, Jung HY. 2009. Milk containing BF-7 enhances the learning and memory, attention, and mathematical ability of normal persons. *Korean J Food Sci Anim Resour* 29:278-282.